




# McDonald Land Guzzle





  
 6 36043 10101 7  
 ISBN 1-58043-023-6  
 GUZ-0101-McD

Arrange the nine 5"x5" square pieces by matching the pictures on the edges. You must form a 15"x15" square, as shown in the diagram below. Can you match the squares?

Arrangez les neuf pièces carrées de 5"x5" en correspondant. Le dessin sur les bords carrés. Il faut que vous faites un carré de 15"x15", qui est indiqué sur schéma ci-dessous. Pouvez-vous correspondre les carrés?





**MCDONALDLAND®**  
**GUZZLE™**

**It's a GAME, It's a PUZZLE.**  
**C'est un jeu, c'est un casse-tête.**

As a game, the first player solves the Guzzle™ or tries to solve the Guzzle™ until they can't go any further. The next player tries to solve the Guzzle™ either by starting where the previous player stopped, or starting all over again. There is no advantage in going first.

Comme un jeu, le premier joueur trouve la solution au Guzzle™ ou essaie de trouver la solution au Guzzle™ qu'il ne puisse pas avancer au-delà. Le prochain joueur essaie de trouver la solution au Guzzle™ par commençant où le précédent joueur a arrêté, ou par commençant tout une autre fois. Il n'y a pas un avantage par avançant premier.

©1997 McDonald's Corporation  
 McDonald's, the Golden Arches logo, McWorld, McWorld logo, McDonaldland, McDonaldland characters names and designs are trademarks of McDonald's Corporation.

©1997 Product By  
 GamesCo, LLC  
 Long Green, MD 21092  
 Made in USA


  
**McDONALDLAND**  
 RONALD & FRIENDS C/ECKERBOARD  
**GUZZLE™**

**IT'S A GAME IT'S A PUZZLE IT'S A GUZZLE**

Puzzle solution



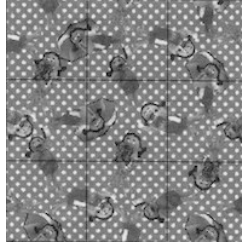


Copyright 1997 McDonalds, GamesCo.  
 (cardboard box containing nine 5" square cardboard pieces)

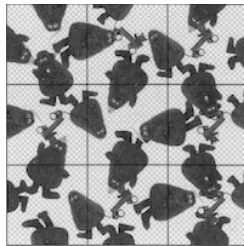
Copyright J. A. Storer



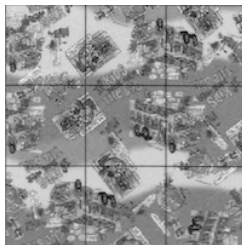
## Other McDonald Land Guzzle Puzzles



*McDonald Land Guzzle - "Birdie"*



*McDonald Land Guzzle - "Grimace"*



*McDonald Land Guzzle - "Bus"*